



JOIN THE MOVEMENT

Going ABOVE & BEYOND with Inclusive Play

Victoria Babb
Cunningham Recreation, Play 4 ALL

David Flanigan, YALP





**Diversity and inclusion
are about giving value
to every human being,
no matter our
differences.**



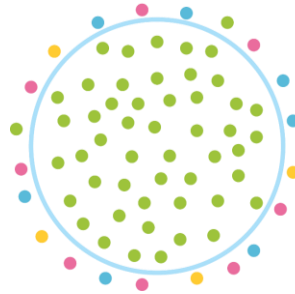
ADA (American with Disabilities Act)

- 1990 ADA Law Passed
- 2010 ADA standards for Accessible Design
 - “Equal Opportunity” - focuses on access

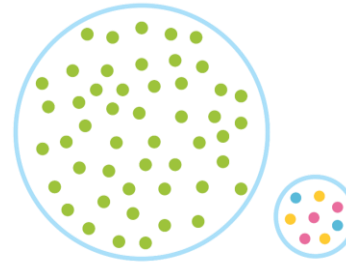


We Believe INCLUSIVE PLAY MATTERS

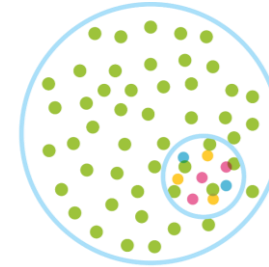
Exclusion



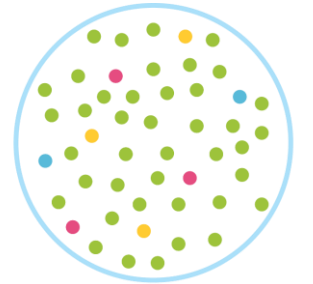
Segregation



Integration



Inclusion



Accessible is Good

Describes a site, building, facility, or portion thereof that complies with the play area guidelines.

—U.S. Access Board

Universal is Best

The design of products & environments to be usable by all people, to the greatest extent possible, without the need for adaptation or specialized design.

—Ron Mace, Center for Universal Design

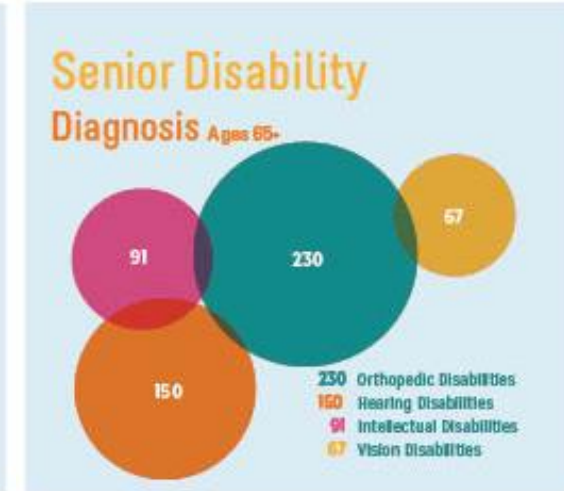
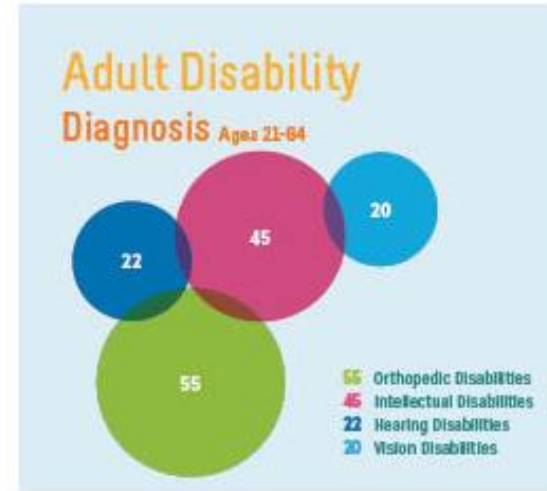
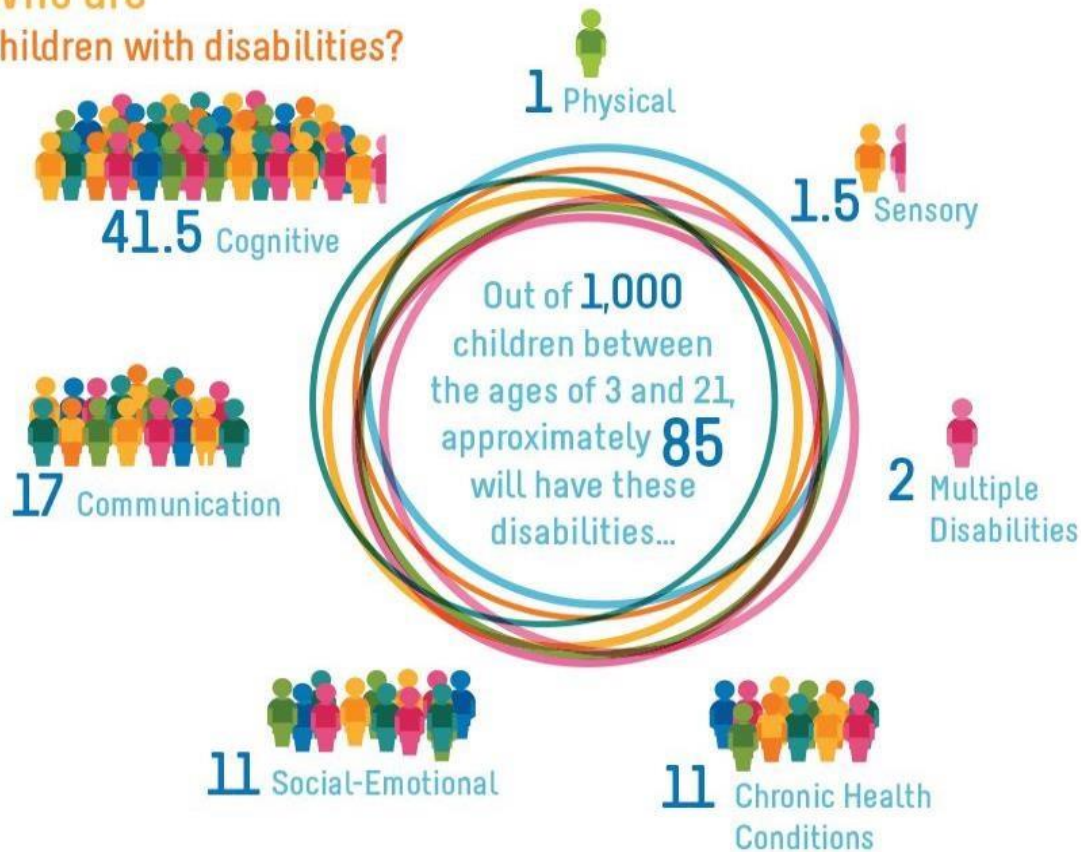






Playgrounds Need to Meet the DIVERSE NEEDS of the COMMUNITY

Who are children with disabilities?



Sources:
 1. U.S. Department of Education (2015). Washington D.C.: Dept of Ed. <https://ideadata.org>
 2. Erickson, W., Lee, C., von Schrader, S. (2016). Disability Statistics from the 2014 American Community Survey (ACS). Ithaca, NY: Cornell University Yang Tan Institute (YTI). Retrieved May 09, 2016 from www.disabilitystatistics.org



Benefits of Inclusive Play

- Safer play setting that provides an emotionally, socially, physically secure environment so children can explore, imagine, engage, take risks, gain skills, confidence and become successful

“Play is the highest form of research”
Albert Einstein



Benefits of Inclusive Play

- Promotes a more active, less sedentary lifestyle so children are able to engage in and enjoy active play for longer periods of time.
- Improves the overall health and well being of society.



Benefits of Inclusive Play



- Ensures the child's right to equality of opportunity, active participation, and independence in play.
- Encourages the removal of both physical and social barriers that often exist on ADA compliant play spaces



Benefits of Inclusive Play

Encourages children to develop a greater understanding of differences and learn deeper empathy

Fosters friendships, ignites joy, provides therapy (mental mind break), and enhances QUALITY OF LIFE.



Benefits of Inclusive Play

- Transformational quality while building social capital through community engagement. Brings community together in meaningful ways.
- Economic impact that can increase commerce and tourism



Inclusion provides VALUE and conveys "Everyone is Welcome".



Wood Forest, TX— Walroo



Salina, KS – Regional Health Center



Salina, KS – Regional Health Center

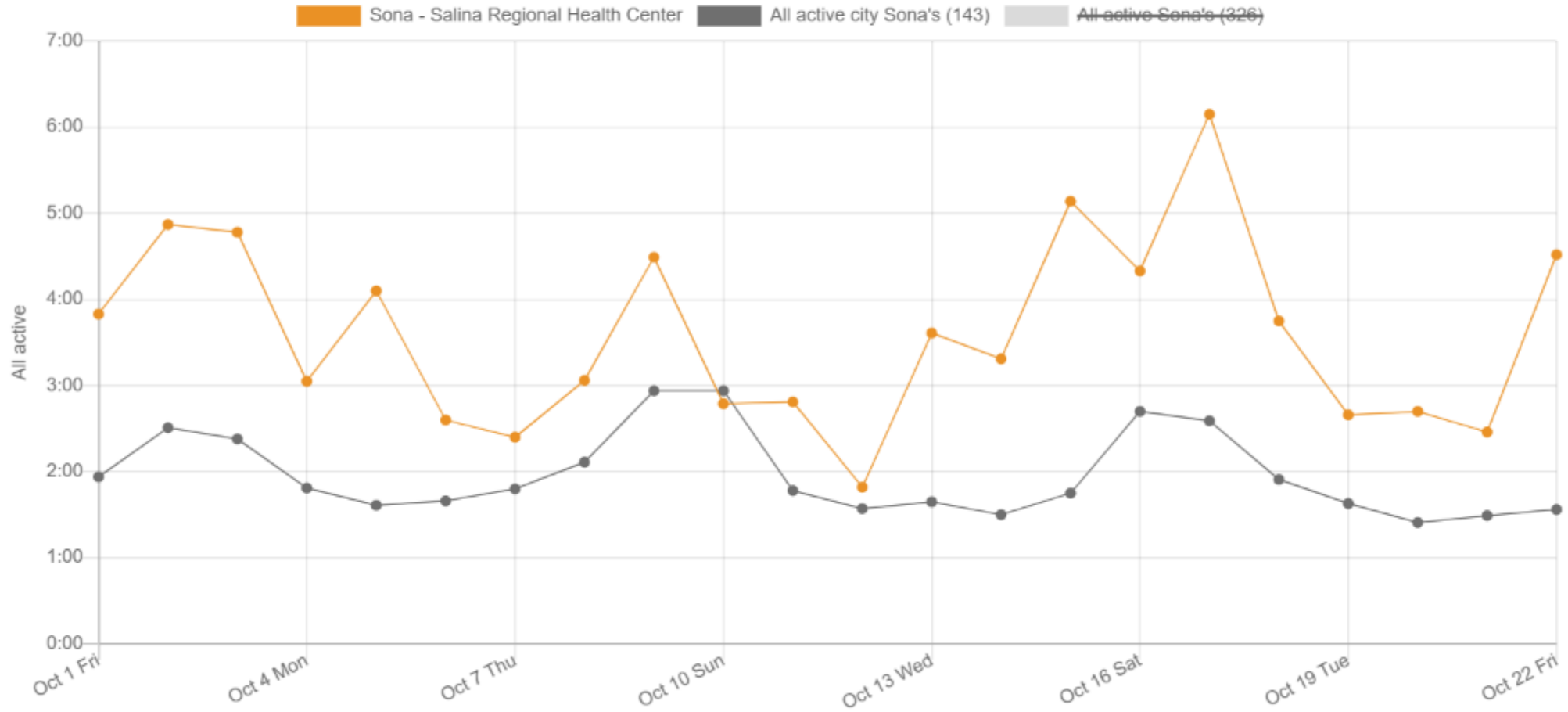
DAILY PLAY HOURS (i)

Download 

10/01/2021  to 10/22/2021  

Last week 

- Sona - Salina Regional Health Center
- All active city Sona's (143)
- All active Sona's (326)



Daily play hours (10/1/2021 to 10/22/2021)

Yalp

Interactive
A NEW WAY TO PLAY

SONA ARCH "COMING THIS SPRING" !!

WONDER SPELEN

DUTCH THEMED SONA

© 2015 Yalp Inc. All rights reserved. Yalp is a registered trademark of Yalp Inc. in the United States and other countries.



Starter Bundle of Games

✓ AMERICAN ENGLISH (5/5)▲

Freeze!
SONA
🎵 Music



ON

Reaction Race
SONA
⚡ Reaction



ON

Runtime
SONA
❤️ Fitness



ON

Moon Monster
SONA
👁️ Imagination



ON

Codebreaker
SONA
🧠 Brains



ON



“SONA is barrier-free and accessible for all ”

	Literacy	Numeracy	Critical Thinking	Creativity	Communication	Collaboration	Initiative	Curiosity	ICT Literacy	Persistence/Grit	Adaptability	Leadership	Social & Cultural	Physical Disability	Learning Disability	Autism	Vision Impaired	Hearing Impaired	Developmental Delays
	21st Century Skills												Inclusive Play						
Freeze		●		●	●						●			●		●	●	●	●
Runtime			●	●	●	●	●	●		●	●	●	●		●			●	
Reaction Race	●	●	●		●				●	●		●		●		●			●
Monster				●	●	●	●	●			●			●	●				
Codebreaker	●	●	●		●	●			●	●		●		●		●			●

Education Skills



Contact us for more information

David Flanigan

(202) 528-7520

David.Flanigan@yalp.com



Victoria Babb

(314) 973-1131

Victoria@cunninghamrec.com



“We don't stop playing because we grow old; we grow old because we stop playing.”

— George Bernard Shaw