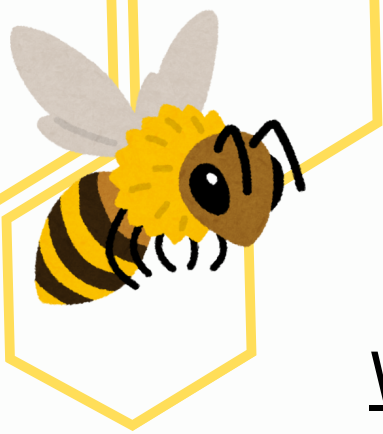


# 24-25 Ohio District Governor's Project Guide



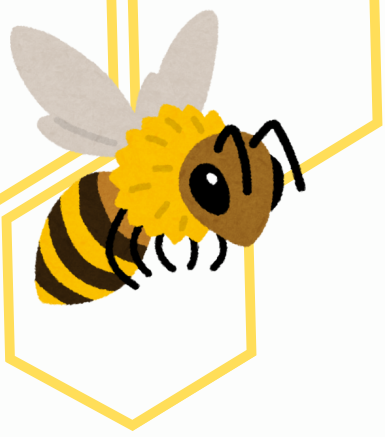
## Pollinator Project



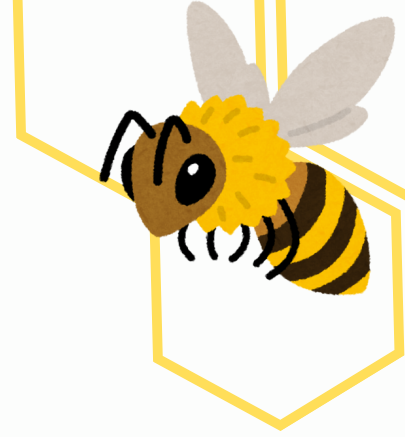
# Table of Contents

|   |    |
|---|----|
| <u>What is the Governor’s Project</u> .....   | 3  |
| <u>How Kiwanis can BEE HEROS</u> .....        | 4  |
| <u>How Kiwanis Clubs can BEE HEROS</u> .      | 5  |
| <u>Save Ohio Bees</u> .....                   | 6  |
| <u>Bee Friendly Seed Mixes</u> .....          | 7  |
| <u>Kids Gardening</u> .....                   | 8  |
| <u>The Bee Conservancy</u> .....              | 9  |
| <u>The Ohio State University-Bee Lab</u> .... | 10 |
| <u>How to get involved by Season</u> .....    | 11 |
| <u>Flowers and Herbs to attract Bees</u> . .. | 12 |
| <u>How to involve SLP</u> .....               | 13 |
| <u>Contact Information</u> .....              | 14 |

All titles in the document are hyperlinked to the sites website where you can learn more!



# What is the Governor's Project



The governor's pollinator project "Bee A Hero" is an opportunity to be a global citizen on a local level. Bees pollinate one third of the food we eat so taking care of them is very important. By taking care of the bees, we are helping to provide a safer and longer standing community for the kids! Each year, bees are experiencing massive die-offs throughout the U.S. Pesticid, herbicides, development, predators, mites and environmental changes all contribute to die off and loss of habitat.

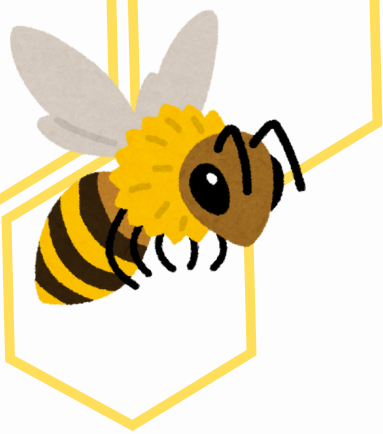


# How Kiwanis can BEE HEROS



As bee Populations decline, individual Kiwanians can help expanding pollinator habits by:

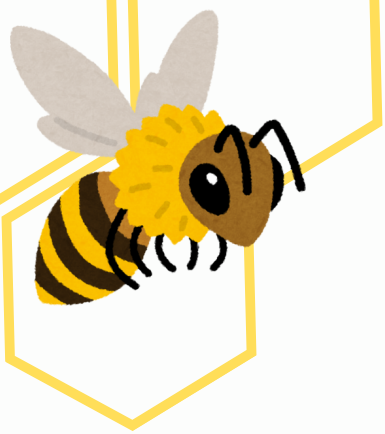
- Create and maintain native pollinator habits in your own yards.(Large gardens to potted plants, it all matters).
- Read labels and use non-toxic herbicides and pesticides in your yard. ( Take the No Pesticides Pledge).
- Overseed your lawn with low growing pollinator plants, like clover and violet.
- Encourage and support neighbors, friends, and family to create and maintain pollinator habitats.
- Support local bee keepers by purchasing and promote their products.



# How Kiwanis Clubs can BEE HEROS



- Build a Pollinator habitat in your community/turn brown space into a native wildflower garden.
- Introduce the pollinator project to schools (Provide seeds and supplies to grow a garden and encourage kids to care about the environmental issues).
- Support SLP's to build BEE habitats.
- Partner with local organizations to support a garden with seed, supplies and labor.
- Imagine what can BEE possible in your community!



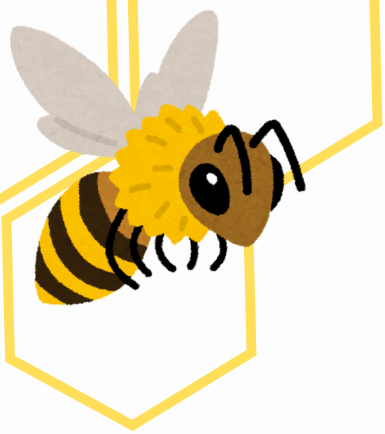
# Save Ohio Bees



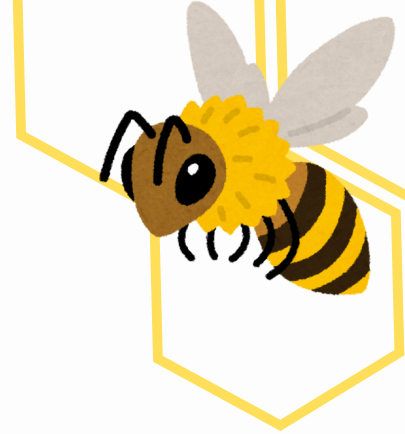
Save Ohio Bees is a place-based, relational approach to mitigating the threats to wild bees and other pollinators.

[Click here](#) to view free guides on how to help the bees and get involved today!





# Bee Friendly Seed Mixes



OPN Seed is an organization that make seed mixes that are best to help pollinators. Pollinators forge to find safe places in native grasses and wildflowers.

[Click here](#) to learn how to plant pollinator friendly seed mixes to keep the bees safe.





# Kids Gardening

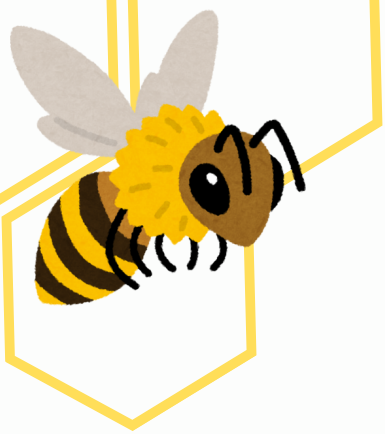


Kids Gardening is a Kiwanis International Partner that works to educate kids on how to garden and how they can have an impact on the environment.

They offer a wide variety of grants, education opportunities and so much more to help kids get engaged with nature. This is an amazing organization to work with to help educate the kids!





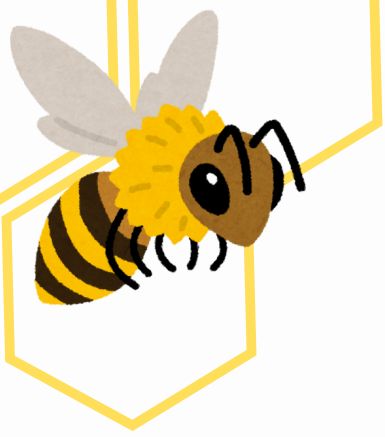


# The Bee Conservancy.



The bee conservancy is a community driven approach to pollinator conservation. They have different information documents on the importance of pollination and different projects that your Kiwanis club can choose!



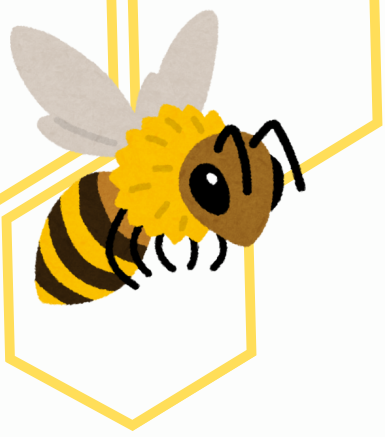


# The Ohio State University-Bee Lab



The Ohio State University Bee lab is a research institute at the OSU Wooster branch that is dedicated to the research and outreach around honey bees, wild bees and pollinator.





# How to get involved by Season



## **Fall:**

To help protect the pollinators in the fall season avoid clearing all leaves, twigs and bushes from your yards. The pollinators will use them as shelter from predator's.

## **Winter:**

To help protect the pollinators in the winter, minimize any ground disturbances. In the cold months 70% of bee species have nests in the ground.

## **Spring:**

To help protect the pollinators in the spring, avoid using pesticides and instead use natural methods to protect your plants. Also start looking into and planting different pollinator plants.

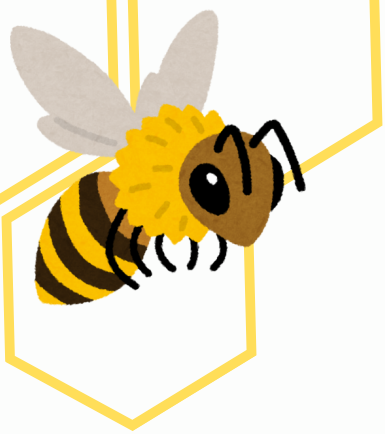
## **Summer:**

To help protect the pollinators in the summer, by watering your plants only when needed, not on a schedule. Increased water on gardens and pollinator plants decreases the pollinators ability to visit the plants and pollinate.



# Flowers & Herbs to Attract Bees

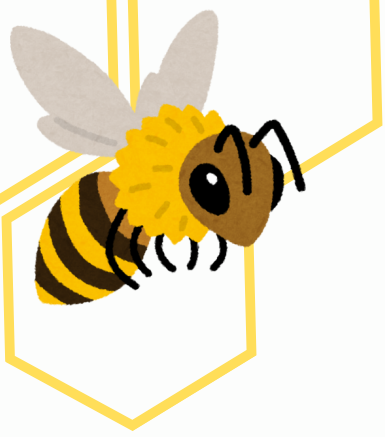




# How to Involve SLP



You can involve Servant Leadership programs in multiple different ways! For the younger SLP members you can educate them on the importance of pollinator and help them to start their own pollinator gardens. For the older SLP members you can combine with them to do large community projects like building pollinator boxes, starting pollinator gardens and so much more!



# Contact Information



## The “Bee” Team

**Governor Kelly Brown**

[Kelly4kiwanis@yahoo.com](mailto:Kelly4kiwanis@yahoo.com)

**Marla Marsh**

[marlamarlmarsh@aol.com](mailto:marlamarlmarsh@aol.com)

**Monica Marsh**

[monicamarsh1@aol.com](mailto:monicamarsh1@aol.com)